



BEST OF LANDSCAPE URBANISM

How can we design cities, to face the challenges of tomorrow?

KNOLLCONSULT UMWELTPLANUNG ZT GMBH

WWW.KNOLLCONSULT.AT

LANDSCAPE

 **Knollconsult**

ABOUT US

Knollconsult Umweltplanung ZT GmbH is an austrian environmental planning consultancy based in Vienna, Krems, Purbach, Graz and Dornbirn. With **over 30 years of Experience**, we provide expertise in Planning, Environmental Planning, Nature Conservation, Landscape Planning and Landscape Architecture to **public and private sector clients**. We strive to design **sustainable solutions** for the environment, that enhance overall quality of life - ranging from urban hubs and cities to smaller settlements. Our primary focus is to **enhance biodiversity and protect the climate** and soils. This goes hand in hand with our drive to **facilitate affordable housing** and **revitalise town centres** - while ensuring that **landscapes and areas of open space are protected**.

OUR EXPERTISE

- Landscape Planning and Design
- Urban and Regional Planning

RANGE OF SERVICES

- Planning
- Environmental Planning and Assessment
- Landscape Architecture

TEAM

- 25 employees
- Experts in Planning, Landscape Planning, Landscape Architecture, Geography, Biology and Environmental Sciences

OUR OFFICES

- Main Office: Vienna
- Other Locations: Krems, Purbach, Graz, Dornbirn



DI THOMAS KNOLL

Managing Director



DI DI JOCHEN SCHMID

Managing Director

OUR SERVICES AND MULTIDISCIPLINARY APPROACH

Knollconsult Umweltplanung ZT GmbH is specialised in delivering **coordinated planning and design solutions** in the fields of **Planning, Environmental Planning and Landscape Architecture**. Our team delivers **sustainable solutions**, that respond to client and project requirements in accordance with **best practice guidance and industry standards**.

“

A SINGLE SOURCE FOR
ENVIRONMENTAL PLANNING

PLANNING

- Regional Planning
- Urban Planning
- Local Plans and Plan Making
- Strategic Environmental Assessments
- Renewable Energy

ENVIRONMENTAL PLANNING

- Environmental Impact Assessment
- Wind Farms
- Hydropower
- Social Infrastructure
- Ecology
- Solar projects
- Ecological Clerk of Works
- Arboriculture
- Public Consultation and Workshops

LANDSCAPE ARCHITECTURE

- Masterplanning and Urban Design
- Public open space for residential developments
- Public Realm Design
- Competitions

OUR EXPERTISE

OUR GOALS

Our team can provide inputs and **advice for all project phases** – from **initial idea** and concept, **through all planning phases, up to implementation and project completion**. Our coordinated approach and strong working relationships with public institutions and private organisations enable us to provide high quality solutions for any project. Our approach is pragmatic and unique, providing a **state of the art approach, that delivers on sustainability**.



WHAT SETS US APART

- Precision and Flexibility
- In-depth understanding of the Austrian Planning System
- Expertise and excellence within our fields of work
- Interdisciplinary approach between planning and the environment
- Experience at all scales, from rural to urban contexts
- A willingness to adapt and develop creative solutions



OUR KEY TO SUCCESS

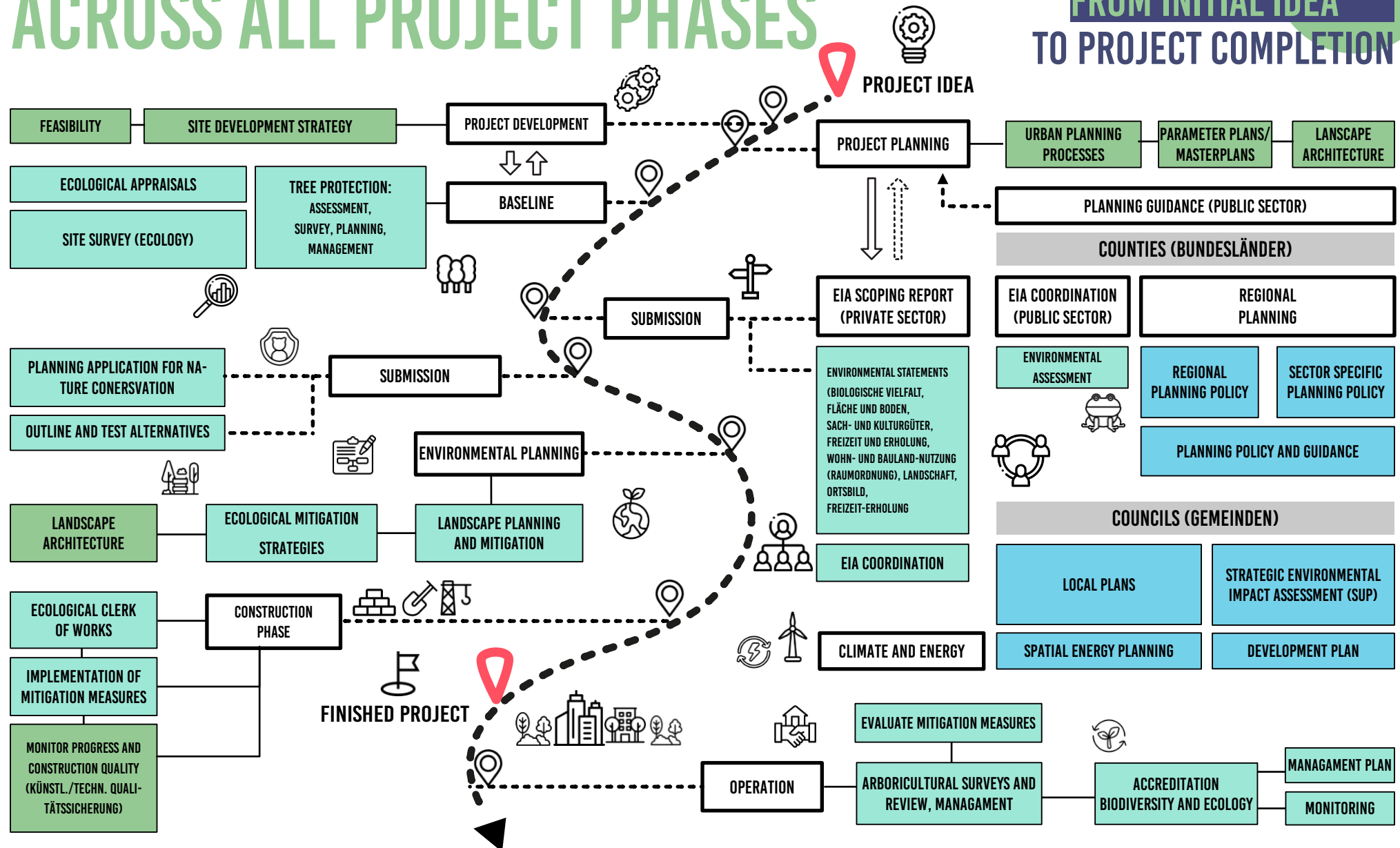
- Recognising and promoting potential
- Transparency and clear structures
- Clear and concise communication
- Understanding the Austrian Planning System and tailoring our deliverables accordingly
- Realising projects consistently
- Respecting and understanding the needs of the public
- Future proofing our designs and project solutions



30 YEARS OF EXPERIENCE ACROSS ALL PROJECT PHASES



WE OFFER ADVICE
FROM INITIAL IDEA
TO PROJECT COMPLETION



OUR APPROACH YOUR BENEFITS

“
WE’RE SHAPING THE THRIVING
CITIES OF TOMORROW, TODAY

LANDSCAPE URBANISM

Our work follows the **principles** of Landscape Urbanism, Landscape First and Paysagiste Urbaniste. This approach combines **ecological sustainability and social responsibility** to create resilient cities.

What defines us, is our **holistic understanding of landscapes**. From project conception, landscape is a central feature and the foundation of any design solution we offer, ensuring a **landscape-led approach**. We perceive settlements as components of a larger ecosystem and develop our projects accordingly - with an **understanding of current and future challenges**.

Our **multidisciplinary approach** enables us to combine the functional and aesthetic value of settlements, while **merging natural and urban** components with each other. We offer workshops, **public engagement** and public consultation events to ensure local people and their needs are considered from an early stage. This guarantees an **in-depth understanding of the local context** and ensures **long-term acceptance** of our projects.

BENEFITS

Benefits for Project Development

- Sustainable projects that combine **environmental responsibility and commercial awareness**
- **Efficient and holistic planning** that incorporates our expertise
- **Long-term** consideration of **resilience in urban environments**, safeguarding a high quality of life

This approach ensures **sustainable, commercially aware and future oriented projects**, that consider social and environmental needs.



OUR LANDSCAPE URBANISM EXPERTS

We're proud of our **talented and well-rounded team of experts**. They are the foundation of our work within Landscape Urbanism, bringing **innovative ideas and sustainable solutions** to the table. Their work contributes to creating aesthetic, functional and **high-quality developments**, that are **adaptable to environmental change** and future proof - promoting a high quality of life within settlements.



DI NIKLAS KANDELSDORFER

LANDSCAPE ARCHITECTURE TEAM

Joined the team in 2013

Landscape Architecture, Masterplanning and Urban Design, Competitions, Visuals



DI CINJA LANGAUER

LANDSCAPE ARCHITECTURE TEAM

Joined the team in 2019

Landscape Architecture, Masterplanning and Urban Design, Planting Plans, Competitions



DI CAROLIN MARTIN

LANDSCAPE ARCHITECTURE TEAM

Joined the team in 2021

Landscape Architecture, Masterplanning and Urban Design, Competitions



DI HEINZ WIND

ENVIRONMENT TEAM

Joined the team in 1998

Landscape Architecture, Landscape Planning, Arboriculture



DI ALEXANDER CSERNY

ENVIRONMENT TEAM

Joined the team in 2003

Landscape Planning, Nature Conservation, Urban and Regional Planning, Communication



DI KARIN MOSER

ENVIRONMENT TEAM

Joined the team in 2004

Landscape Planning and Nature Conservation



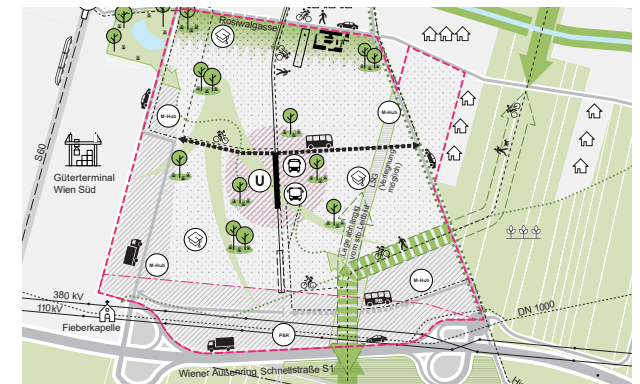
DI DOMINIK SCHWÄRZLER

PLANNING TEAM

Joined the team in 2016

Panning, Masterplanning and Urban Design

VIENNA'S LAST LARGE SETTLEMENT EXTENSION
STRUCTURAL CONCEPT
FOUNDATION FOR FUTURE PLANS



ROTHNEUSIEDL WIEN
(2018–2020)

Rothneusiedl is the last, large settlement extension in Vienna. It is based on the principles outlined in local planning documents, which were produced by Knollconsult. We provided **Planning and Environmental advice**, as well as inputs to embed the development proposals into the existing context.

LANDSCAPE URBANISM

PROJECT EXAMPLES

IN COOPERATION WITH :

- ALBERT WIMMER ZT GMBH
- KNOLLCONSULT UMWELTPLANUNG ZT GMBH
- ROSINAK & PARTNER ZT GMBH
- ZELENY INFRASTRUKTURPLANUNG ZT GMBH

02

LANDSCAPE FIRST - PARK AND LAKE FIRST
BIODIVERSITY MITIGATION AREAS
GREEN INFRASTRUCTURE, POCKETPARKS, PUBLIC SQUARES



HAUNSTETTEN AUGSBURG (1. PRIZE)
(03/2019–08/2020)

A new settlement extension in Augsburg, focussing on landscape-led design. The **200 ha** project in Haunstetten Südwest is the **largest settlement extension in Augsburg**. Our team integrated the proposed development within the existing settlement structure through detailed site analysis and in-depth understanding of the local context.

SUSTAINABLE QUARTER FOR THE FUTURE
COURTYARDS AS MEETING PLACES
GREEN INFRASTRUCTURE NETWORK



PLANKERHEIDE KREFELD (1. PRIZE)
(08/2023)

A proposal for a new, **13 ha** residential development in Fischeln Krefeld. Our team was able to create a design that enables **green, sustainable living at an urban scale**.

KNOWLEDGE CAMPUS AND QUALITY OF LIFE
GREEN RING, GREEN CENTRE, GREEN FRINGE
URBAN RING, RETAINING EXISTING TREES



MMQ2 MÜNSTER (1. PRIZE)
(02/2024)

The Urban Chameleon creates a combined knowledge campus and residential development that **delivers on sustainability**. Our team was able to integrate the proposals into the local context through an urban ring and complementary green ring, which create connections to the existing settlement and green infrastructure corridors.

LANDSCAPE URBANISM

PROJECT EXAMPLES

LANDSCAPE ARCHITECTURE

03

INTEGRATING CITY AND NATURE
SCHWAMMSTADT
OUTDOOR CLASSROOMS



FH CAMPUS WIEN
(2018–2022)

A new campus including a House of Science & Engineering and areas of open space was developed in the 10th district of Vienna. Our team designed the areas of open space, outdoor classrooms and break out spaces - applying principles of **climate friendly planting design**.

PARK ABOVE THE MOTORWAY
AREAS FOR RECREATION IN HIGHLY URBAN LOCATION
CONNECTION TO THE DONAUKANAL



TRIIPLE WIEN
(2016–2021)

A new residential development incorporating an **urban square, play areas and public open spaces** was created in Vienna's 3. District. A **park** covering an area of 2900m² was created, which is located above the Motorway - providing a space for **recreation**, while also offering a **connection** to the Donaukanal.

URBAN LANDSCAPE- CLIMATE ADAPTATION
INTERNATIONAL BUILDING EXHIBITION PROJECT
MICROCLIMATE AND GREEN FACADES



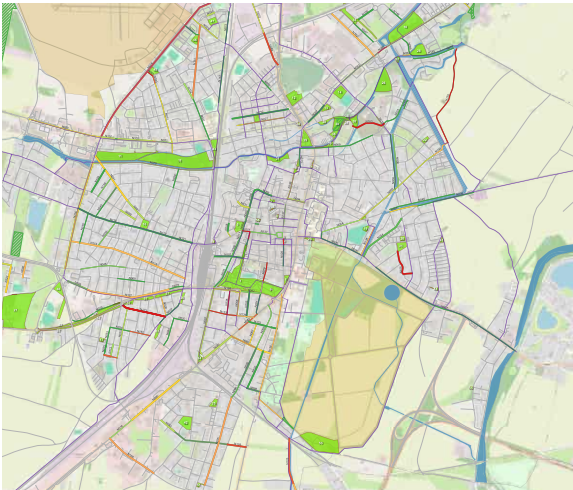
BIOTOPE CITY WIEN
(2018–2021)

This development revitalises an industrial area of Vienna, providing a high density, green, mixed-use quarter. The project **follows the principles of the „Biotope City“**.

LANDSCAPE URBANISM GREEN NETWORKS

PROJECT EXAMPLES

04



GRÜN - UND FREIRÄUME

(STRATEGY FOR GREEN AND OPEN SPACES)

(2023–2024)

The STEP WN2030+ is a planning document, that defines the future development of Wiener Neustadt. The project implements the aims of the document, by creating a **landscape management plan** and providing a **GIS-Tool** that locates areas of green and open space. This tool **appraises the current condition**, as well as **providing landscape management measures** to maintain and enhance the identified areas.

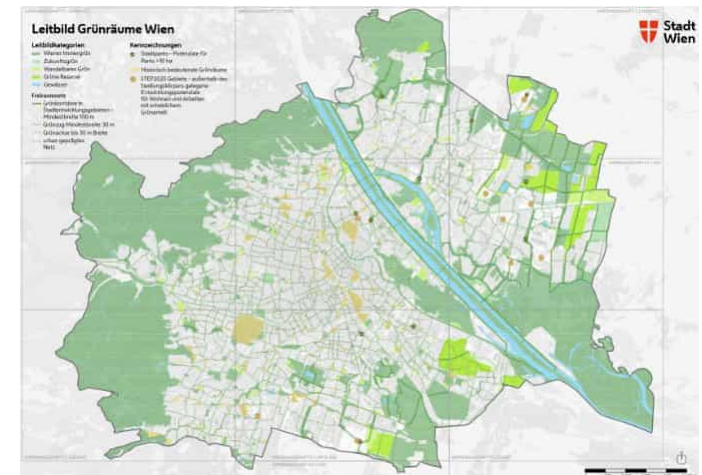
STEP WN2030+
LANDSCAPE MANAGEMENT
GREEN INFRASTRUCTURE
BLUE GREEN STREETS

LEITBILD GRÜNRÄUME WIEN

(2021–2024)

This document provides an **overview of existing areas** of green and open space and **categorises** these **according to local planning goals**.

STEP 2025
GREEN INFRASTRUCTURE
CLIMATE GOALS AND GREEN NETWORKS GOALS
REGIONAL PLANNING



LANDSCAPE URBANISM

LANDSCAPE STRATEGY

PROJECT EXAMPLES

05

- # SECURING HIGH-QUALITY GREEN SPACE
- # BIODIVERSITY
- # CITY ECOLOGY
- # CITY CLIMATE
- # GREEN SPACE PROVISION

- # ANALYSIS OF DIRECT AND INDIRECT EFFECTS
- # DEVELOPMENT OF A VERSATILE DISTRICT
- # EIA COORDINATION AND ENVIRONMENTAL STATEMENT

GRÜNZUG DONAUFELD WIEN (2021–2023)

Donaufeld is identified as a potential area for residential and office developments in local planning documents. Developing the area **sustainably** requires a **central green space** that incorporates a city park and creates connections to local green infrastructure. Our team developed a masterplan, that ensures the project delivers on providing a high-quality green network.

OBERES HAUSFELD - UVE STÄDTEBAUVORHABEN (2020–2024)

Oberes Hausfeld is designated to provide **residential and mixed-use development**. Our team was part of determining the **environmental effects** of the project and coordinating the environmental impact assessment.



„LANDSCAPE HAS BECOME THE LENS THROUGH WHICH THE CON-
TEMPORARY CITY IS REPRESENTED AND THE MEDIUM THROUGH
WHICH IT IS
CONSTRUCTED.“

— CHARLES WALDHEIM

LET US PLAN A SUSTAINABLE FUTURE TOGETHER!

KNOLLCONSULT UMWELTPLANUNG ZT GMBH

Obere Donaustraße 59

1020 Wien

☎ +43 1 2166091

✉ office@knollconsult.at

🌐 www.knollconsult.at

 **Knollconsult**